

GATE-LOK

A BLUE RIBBON SAFETY PRODUCT

INSTALLATION INSTRUCTIONS



1 CHOCK WHEELS, RAISE **EMPTY** BED

Carefully raise the bed. Release tailgate locking jaws to allow tailgate to open.



2 PLACE GATE-LOK OVER TAILGATE PIN

Make sure the pin is clear of debris and slide the Gate-Lok over pin. The narrow part of the chain slot faces in toward the tailgate.



3 INSERT HANDLE END IN LOCKING JAWS

Push tailgate fully open and insert the handle into the locking jaws.



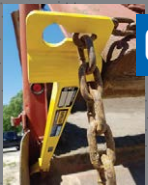
4 ENGAGE LOCKING JAWS

Engage locking jaws to close around the Gate-Lok handle using the truck's locking lever.



5 SECURE SPREADER CHAIN

Feed the tailgate spreader chain into the chain locking tab, making sure it locks into place in the slot.



6 PROPERLY INSTALLED GATE-LOK

Gate-Lok is properly installed as shown.

IMPORTANT:

The Gate-Lok device is not meant to be used with the truck in motion as a tailgate prop while spreading material.

BLUERIBBON
SAFETY

MANUFACTURED AND DISTRIBUTED BY

takt

For more information: WWW.TAKTLLC.COM